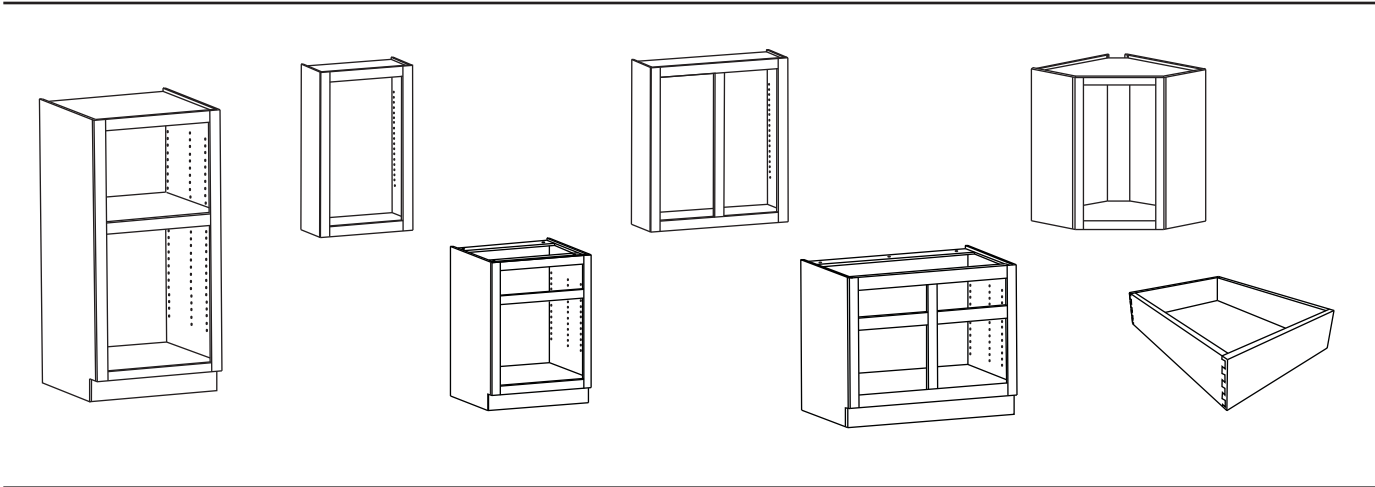


# Flat Pack Ready to Assemble Cabinets and Drawer Boxes

Manufactured with quality materials and available in custom sizes, our flat pack cabinet program is the perfect answer when replacing or adding cabinets in your remodeling projects.



*Put our Cabinets to work for you.*

### Custom Capabilities

Northern Contours has complete custom capabilities. We provide a free quotation service and encourage you to contact Customer Service (toll free 877.998.1814) with special requests, custom sizes and for information on project discounts. Custom items requiring engineering and drafting will be subject to an additional charge.

### Cabinet Boxes

Cabinet boxes are shipped flat and ready to assemble. They are constructed with nominal 1/2" 7 ply prefinished plywood, CARB Phase 1 compliant. Standard depth for base cabinets is 24". Standard depth for wall cabinets is 12". Custom sizes are available. Please note that a 24" cabinet depth is required for any base cabinet ordered with drawers and slides from Northern Contours due to slide length. Drawer boxes of different depths can be manufactured, but they will ship without slides.

### Special Sizes

Deviations from standard sizes are subject to an upcharge. See price list for details. Minimum cabinet width is 9", cabinet with drawer minimum width is 12". Maximum width is 48". Minimum cabinet height is 12", maximum height is 60". Maximum pantry height with fixed toe kick is 95.5", we offer a tall pantry with separate plinth base if additional height is needed. Minimum cabinet depth is 6", maximum depth is 24".

### Face Frames

Face frames are constructed with hardwood and can be ordered individually without the cabinet box. Face frame only orders do not have dados. Assembled face frame minimum width is 9", maximum width is 48". Assembled face frame minimum height is 12", maximum height is 60". Standard stile and rail dimensions are 1-1/2". Minimum stile width is 3/4" (on cabinets without drawers), Maximum stile width is 6". Minimum rail width is 3/4", Maximum rail width is 6". Deviations from standard sizes are subject to an upcharge. Call Customer Service for details.

### Shelves

Standard shelves are full depth 3/4" 11 ply prefinished plywood, CARB Phase 1 compliant. Exposed edge is edgebanded. Half shelves are available.

One adjustable shelf is included with base cabinets. Two adjustable shelves are included with wall cabinets 36" or less in height, three with wall cabinets >36". Three adjustable shelves and one fixed shelf are included with pantry cabinets. Additional shelves can be purchased.

### Reveals on Cabinet Ends

Standard reveals are 1/4" left and right. Flush reveals are available on most cabinets at no extra charge. NCC-DCW is only available with 1/4" reveals.

### Sink Base

If you select yes in the Sink Base field under Cabinet Options, you will not receive drawer boxes with your order.

### Drawer Boxes

Drawer boxes are shipped flat and ready to assemble. Dovetail drawer boxes can be assembled for an additional fee, see price list for details. Drawer boxes that are included with the cabinet box will automatically ship with the cabinet and do not need to be ordered on the drawer box order form.

**Standard Drawer Box** is nominal 1/2" 7 ply prefinished plywood, CARB Phase 1 compliant. with dowel construction and side mount epoxy coated slides with rear mount sockets. Screw mount is available upon request at no additional charge. Slides are designed for 24" cabinet depths with 21" drawer boxes. Bottom is nominal 1/4" plywood. Drawers 27" and wider will have nominal 1/2" plywood bottoms. Drawers included with cabinet orders will be sized according to cabinet dimensions. Standard drawer box depth is 21", width and height are 1" smaller than the cabinet box drawer opening. Minimum depth is 6", maximum depth is 24". Minimum height is 3", maximum height is 12". Minimum width is 6", maximum width is 36".



## Product Information

**Half-blind Furniture Dovetail Drawer Box** is 5/8" hardwood with nominal 1/4" CARB Phase 1 compliant plywood bottom. Drawers 27" and wider will have nominal 1/2" CARB Phase 1 compliant plywood bottoms. Choice of Blum Solo or Blum Tandem Plus (with Blumotion) slides with all dovetail drawer boxes. Slides are designed for 24" cabinet depths with 21" drawer boxes. Drawers included with the cabinets will be sized according to cabinet dimensions. Standard drawer box depth is 21, width is 3/8" smaller and height is 1" smaller than the cabinet box drawer opening. Minimum depth is 6", maximum depth is 24". Minimum height is 2", maximum height is 8.5". Minimum width is 6", maximum width is 36".

**Rollout Trays** are available on all single opening cabinet boxes including NCC-FHDB, NCC-1DB, NCC-PB, and NCC-TPB and must be ordered separately on the Rollout Tray order form. Rollout Trays are 5/8" hardwood half-blind furniture dovetail construction. Available in heights ranging from 2.5" to 4". Minimum depth is 6", maximum depth is 24". Minimum width is 6", maximum width is 36". Bottoms are nominal 1/2" plywood, CARB Phase 1 compliant. Choice of Blum Solo or Blum Tandem Plus (with Blumotion) slides. Slides are designed for 24" cabinet depths with 21" drawer boxes. Cabinet backs will not be machined for rollout hardware.

## Assembly Instructions

Cabinet assembly instructions will ship with your order. They can also be found at [www.northerncontours.com](http://www.northerncontours.com), under the marketing downloads link. All components are labeled and numbered for clarification.

## Cabinet Doors and Drawer Fronts

We offer a full range of thermofoil, wood and veneer cabinet doors and drawer fronts. If requested, we will make every effort to ship cabinet, drawer and door orders together if all items are ordered through our Minnesota manufacturing locations. Please make a note on all applicable order forms if you would like to utilize this service. Northern Contours is not responsible for measuring and ordering doors and drawer fronts for your cabinets and a separate order form is required.

## New Accounts

An account must be established before placing an order. Please contact your sales representative to fill out the appropriate paperwork. Credit lines are available with terms of 1%10/Net30. You may also pay by credit card. First orders require a down payment of 50% in advance. Initial orders will not be put into production until the deposit has been received.

## Order Forms

For clarity and efficiency, orders must be placed on Northern Contours Cabinet order forms. These forms can be obtained from your customer service representative or downloaded from our website, [www.northerncontours.com](http://www.northerncontours.com).

## Quotes

Quotes are available prior to placing your order. To receive a quote, select or write "quote" in the drop down menu on the order form and send to customer service. Customer service will fax the quote request back to you or give you a call within 24 hours. Quotes are valid for 30 days unless otherwise noted.

## Ordering Instructions

Orders may be placed 7 days a week, 24 hours a day via e-mail or fax. Cabinet order forms can be filled out electronically on an interactive PDF form if you have the latest version of Adobe Reader. Adobe Reader is free and available at <http://get.adobe.com/reader/>.

To ensure that we manufacture exactly what you require, please use the specific cabinet order form for your cabinet and follow these steps:

1. Select or write "order" in the drop down menu at the top of page.
2. Fill out Date, Job Name, PO#, Ordered By and Customer ID (if known).
3. Fill out Bill to, Ship to and Ship Via information, including an email address and whether the shipping location is commercial or residential.
4. For face frame only orders, check the box and enter quantity and all dimensions related to the face frame.

5. Enter quantity of components and required sizes. If using an interactive PDF order form, the drop down menus will default to our standard. You can override those options. All Cabinet Option and Cabinet Dimension fields must be filled out.
6. For additional requests or requirements, such as delivery requirements, please clarify in the Notes column.

## Order Acknowledgement

Northern Contours acknowledges ALL orders, usually within 24 hours. If you do not receive an acknowledgement, please contact customer service to be sure that we have received your order.

When you receive your order acknowledgement, review it carefully to be sure it matches your requirements. You have 24 hours from receipt of acknowledgement to report any discrepancies. Northern Contours is not responsible for unreported discrepancies.

## Order Changes and Cancellations

Due to our service and delivery commitment, any change or cancellation made to your order after it has gone into production is subject to a \$20 charge plus the cost of time and materials unless it is within 24 hours from receipt of acknowledgement. **Changes or cancellations must be received in writing.** All changes and cancellations will be acknowledged.

## Leadtime

Leadtime for cabinet boxes is **10 working days**. The day you receive your acknowledgement is business day one.

## Packaging

All of our packaging specifications meet or exceed UPS or common carrier standards. Cartoning and pallet charges are included in the prices shown on our price page.



## Placing an Order

### Shipping

All prices are FOB plant location. Order size and delivery location will determine how your product will be shipped. Arrangements can be made for your orders to be picked up. Please indicate your shipping preference and receiving capabilities (shipping dock, forklift or pallet jack) on your Northern Contours order form.

UPS charges are based on the total weight of the order and are added to the invoice at the time of shipment. Common carrier orders are shipped prepaid and freight is invoiced. Oversized items may be subject to additional shipping charges.

### Order Receipt

Northern Contours strives to ship your orders accurately, completely and on time. All orders are shipped FOB manufacturing facility. Northern Contours is not responsible for any product damaged in transit or by excessive handling or poor storage conditions. Inspect the contents of your shipment before signing your delivery receipt.

### Freight Damage

If your order was **shipped via UPS** and is damaged, sign for it noting damages or the possibility of concealed damages, and then notify UPS immediately of damages by calling 800-742-5877 or online at [www.UPS.com](http://www.UPS.com).

If order was **shipped common carrier**, sign the delivery receipt in one of the following ways:

1. Sign noting that there is damage.
2. Sign noting that you suspect that there is possible concealed damage.
3. If you do not have time to inspect your product when it arrives, note on delivery receipt that you did not inspect it. You will then need to inspect it within 24 hours and notify Northern Contours of any damage.
4. Simply sign your name. This indicates you've inspected the order and accept responsibility for the condition of its contents.

You must keep a copy of the delivery receipt.

If you sign for your delivery receipt without any notes, Northern Contours will charge you for remakes. **Please call Northern Contours within 24 hours of receipt of any freight damaged product.**

### Order Discrepancy

Inspect your entire order to ensure the condition of your product is acceptable and quantity and sizes agree with your order acknowledgement. If there are any discrepancies or quality concerns, let us know **within 10 working days of receipt**. Northern Contours is not responsible for missing or damaged items unless reported within this time.

### Remakes

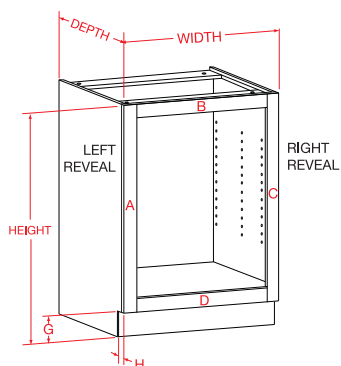
In the event that you receive a component with a defect as a result of an error, please provide detailed information regarding the reason for the remake so that we can be sure to manufacture the remake correctly. We will ship a replacement via regular shipping, within 5 days for most products. If Northern Contours is not responsible for the error, we will invoice the remake at regular price.

Northern Contours may request that the faulty product be returned for inspection. This allows us to examine the components in order to understand the source of the flaw and work to improve product quality.

### Product Warranty

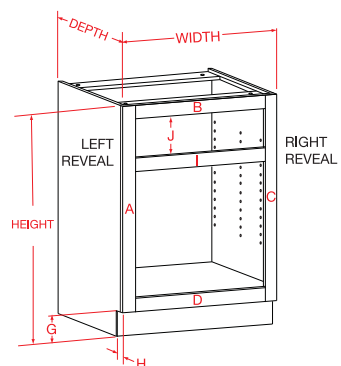
Northern Contours, Inc. warrants the parts it manufactures to be free from defects in material and workmanship, to be machined to proper size and with the proper milling to accomplish easy and accurate assembly. Northern Contours makes no further warranty either expressed or implied.

## Base Cabinet Specifications



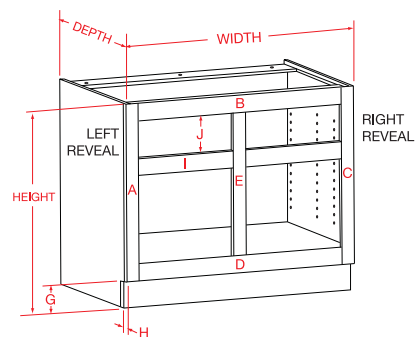
### NCC-FHDB - Full Height Door Base Cabinet

- Cabinet: Recommended width range is 12" to 36". For cabinet widths > 24" and up to 36", we recommend using two butt doors instead of a single door. Standard depth is 24" and height is 34.5" Custom sizes are available.
- Shelves: Two full depth adjustable shelves are included.
- Drawer Boxes: Standard drawer boxes are not included with this cabinet. Hardwood dovetail rollout trays are available as upgrades. Rollout trays must be ordered separately on the NCD-ROLL order form.
- Reveals: Standard reveals are 1/4" left and right. Flush options are available at no extra charge.



### NCC-1DB - Single Door Base Cabinet

- Cabinet: Recommended width range is 12" to 36". For cabinet widths > 24" and up to 36", we recommend using two butt doors instead of a single door. Standard depth is 24" and height is 34.5" Custom sizes are available.
- Shelves: One full depth adjustable shelf is included.
- Drawer Boxes: One standard drawer box is included with this cabinet. Hardwood dovetail drawer boxes and rollout trays are available as upgrades. Rollout trays must be ordered separately on the NCD-ROLL order form.
- Reveals: Standard reveals are 1/4" left and right. Flush options are available at no extra charge.

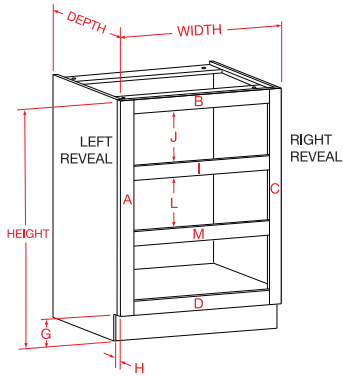


### NCC-2DB - Double Door Base Cabinet

- Cabinet: Recommended width range is 30" to 48". Standard depth is 24" and height is 34.5" Custom sizes are available.
- Shelves: One full depth adjustable shelf is included.
- Drawer Boxes: Two standard drawer boxes are included with this cabinet. Hardwood dovetail drawer boxes are available as upgrades.
- Reveals: Standard reveals are 1/4" left and right. Flush options are available at no extra charge.

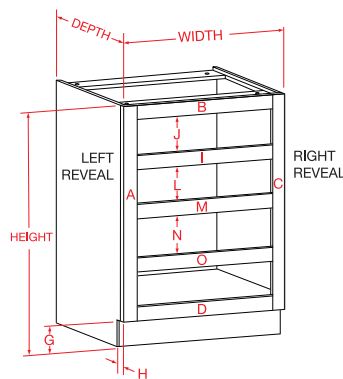


Technical Information



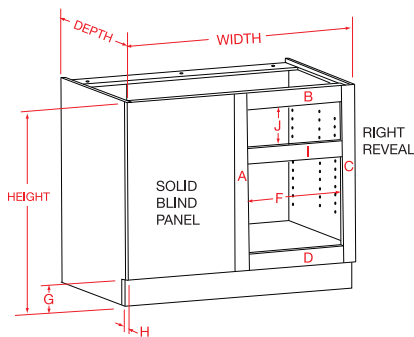
**NCC-3DB - Three Drawer Base Cabinet**

- Cabinet: Recommended width range is 12” to 36”. Standard depth is 24” and height is 34.5” Custom sizes are available.
- Drawer Boxes: Three standard drawer boxes are included with this cabinet. Hardwood dovetail drawer boxes are available as upgrades.
- Reveals: Standard reveals are 1/4” left and right. Flush options are available at no extra charge.



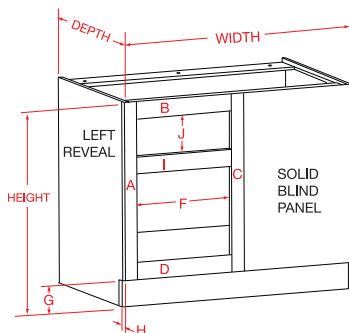
**NCC-4DB - Four Drawer Base Cabinet**

- Cabinet: Recommended width range is 12” to 36”. Standard depth is 24” and height is 34.5” Custom sizes are available.
- Drawer Boxes: Four standard drawer boxes are included with this cabinet. Hardwood dovetail drawer boxes are available as upgrades.
- Reveals: Standard reveals are 1/4” left and right. Flush options are available at no extra charge.



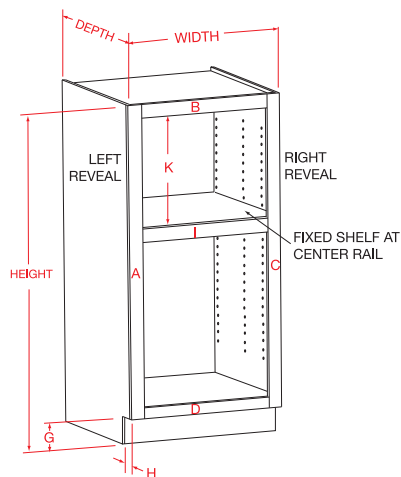
**NCC-BCLB - Blind Corner Left Base Cabinet**

- Cabinet: Recommended width range is 36” to 48”. Standard depth is 24” and height is 34.5” Custom sizes are available.
- Shelves: One full depth adjustable shelf is included.
- Drawer Boxes: One standard drawer box is included with this cabinet. Hardwood dovetail drawer boxes are available as upgrades.
- Reveals: Standard reveal on right will be 1/4”. Flush option is available at no extra charge.



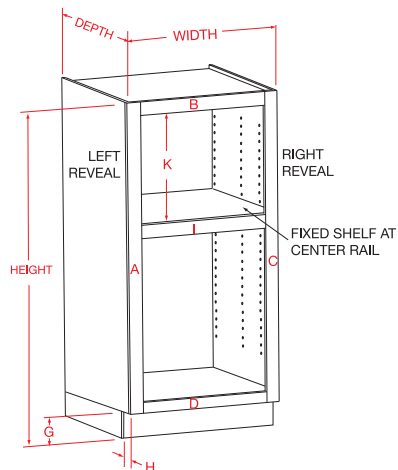
**NCC-BCRB - Blind Corner Right Base Cabinet**

- Cabinet: Recommended width range is 36” to 48”. Standard depth is 24” and height is 34.5” Custom sizes are available.
- Shelves: One full depth adjustable shelf is included.
- Drawer Boxes: One standard drawer box is included with this cabinet. Hardwood dovetail drawer boxes are available as upgrades.
- Reveals: Standard reveal on left will be 1/4”. Flush option is available at no extra charge.



### NCC-PB - Pantry Base Cabinet

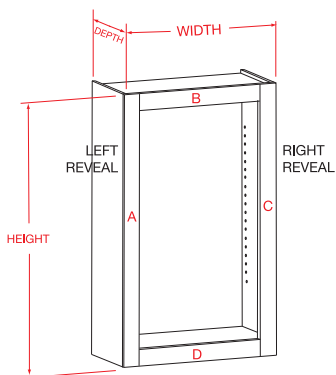
- Cabinet: Recommended width range is 18" to 48" with a height range of 84" to 90". Use cabinet NCC-TPB for cabinets taller than 90". Standard depths are 12 or 24". Custom sizes are available.
- Shelves: Three adjustable full shelves and one fixed shelf are included with this cabinet.
- Drawer Boxes: Rollout trays with slides are available for cabinets 24" deep. Rollout trays ordered in depths other than 24" will ship without slides. Rollout trays must be ordered separately on the NCD-ROLL order form.
- Reveals: Standard reveals are 1/4" left and right. Flush options are available at no extra charge.



### NCC-TPB - Tall Pantry with Separate Plinth Base Cabinet

- Cabinet: Separate plinth base is included for extra tall pantry cabinets. Recommended width range is 12" to 36" with a height range of 90"+ (including plinth base). **Be sure to include the plinth base height in your total cabinet height dimension on the order form.** Standard depths are 12" or 24" Custom sizes are available.
- Shelves: Three adjustable full shelves and one fixed shelf are included with this cabinet.
- Drawer Boxes: Rollout trays with slides are available for cabinets 24" deep. Rollout trays ordered in depths other than 24" will ship without slides. Rollout trays must be ordered separately on the NCD-ROLL order form.
- Reveals: Standard reveals are 1/4" left and right. Flush options are available at no extra charge.

## Wall Cabinet Specifications

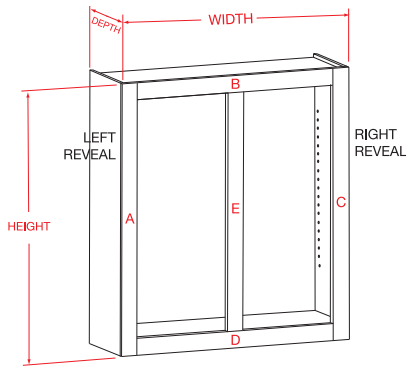


### NCC-1DW - Single Door Wall Cabinet

- Cabinet: Recommended width range is 12" to 36". Recommended height range is 12" to 42". Cabinets 12" to 24" in height are available in depths of 12" or 24". Cabinets 24" to 42" in height are available in depths of 12". For cabinet widths > 24" and up to 36", we recommend using two butt doors instead of a single door. Custom sizes are available.
- Shelves: Two full depth adjustable shelves are included with cabinets 12-36". Three full depth adjustable shelves are included with cabinets > 36" in height.
- Reveals: Standard reveals are 1/4" left and right. Flush options are available at no extra charge.

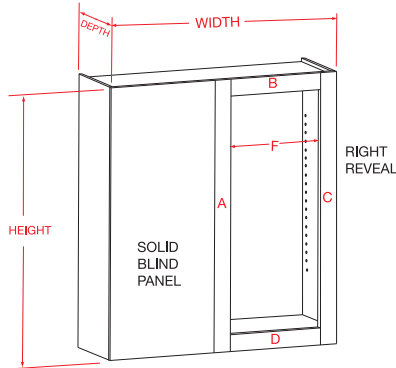


## Technical Information



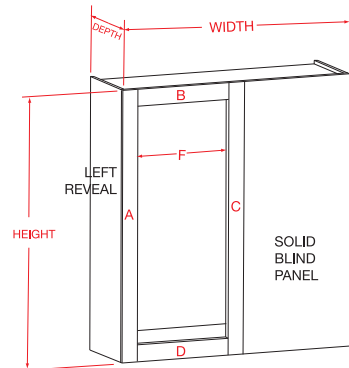
### NCC-2DW - Double Door Wall Cabinet

- Cabinet: Recommended width range is 30" to 48". Recommended height range is 12" to 42". Cabinets 12" to 24" in height are available in depths of 12" or 24". Cabinets 24" to 42" in height are available in depths of 12". Custom sizes are available.
- Shelves: Two full depth adjustable shelves are included with cabinets 12-36". Three full depth adjustable shelves are included with cabinets > 36" in height.
- Reveals: Standard reveals are 1/4" left and right. Flush options are available at no extra charge.



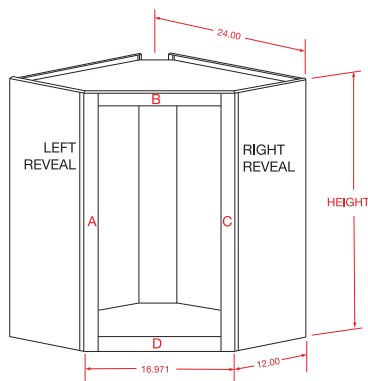
### NCC-BCLW - Blind Corner Left Wall Cabinet

- Cabinet: Recommended width range is 30" to 48". Recommended height range is 24" to 42". Standard depth is 12". Custom sizes are available.
- Shelves: Two full depth adjustable shelves are included with cabinets 12-36". Three full depth adjustable shelves are included with cabinets > 36" in height.
- Reveals: Standard reveal on right will be 1/4". Flush option is available at no extra charge.



### NCC-BCRW - Blind Corner Right Wall Cabinet

- Cabinet: Recommended width range is 30" to 48". Recommended height range is 24" to 42". Standard depth is 12". Custom sizes are available.
- Shelves: Two full depth adjustable shelves are included with cabinets 12-36". Three full depth adjustable shelves are included with cabinets > 36" in height.
- Reveals: Standard reveal on left will be 1/4". Flush option is available at no extra charge.

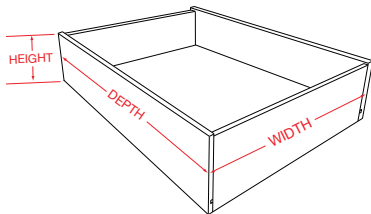


### NCC-DCW - Diagonal Corner Wall Cabinet

- Cabinet: Recommended height range is 24" to 42". Width and depth dimensions are shown on drawing and cannot be altered.
- Shelves: Two full depth adjustable shelves are included with cabinets 24-36". Three full depth adjustable shelves are included with cabinets > 36" in height.
- Reveals: 1/4" left and right.

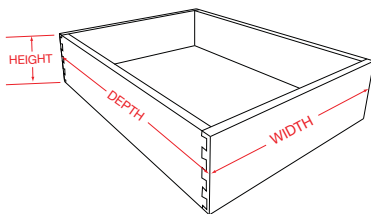
## Drawer Box Specifications

### NCD-DWL - Standard Plywood with Dowel Construction



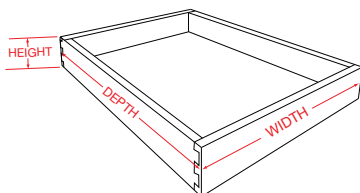
- Drawer Boxes: Nominal 1/2" plywood drawer boxes with dowel construction. Standard drawer box depth is 21". Minimum depth is 6", maximum depth is 24". Minimum height is 3", maximum height 12". Minimum width is 6", maximum width is 36".
- Slides: Side mount epoxy coated with rear mount sockets designed for cabinets 24" in depth.
- Bottom: Nominal 1/4" plywood, drawers 27" and wider will have nominal 1/2" plywood bottoms.

### NCD-DOV - Half-Blind Furniture Dovetail Construction



- Drawer Boxes: 5/8" hardwood drawer boxes with dovetail construction. Standard drawer box depth is 21". Minimum depth is 6", maximum depth is 24". Minimum height is 2", maximum height is 8.5". Minimum width is 6", maximum width is 36".
- Slides: Option of Blum Solo or Blum Tandem Plus (with Blumotion) undermount slides. Slides are designed for cabinets 24" in depth.
- Bottom: Nominal 1/4" plywood, drawers 27" and wider will have nominal 1/2" plywood bottoms.

### NCD-ROLL - Rollout Trays



- Rollout Trays: 5/8" solid hardwood drawer boxes with dovetail construction. Available in heights ranging from 2.5" to 4". Minimum depth is 6", maximum depth is 24". Minimum width is 6", maximum width is 36".
- Slides: Option of Blum Solo or Blum Tandem Plus (with Blumotion) undermount slides. Slides are designed for cabinets 24" in depth.
- Bottom: Nominal 1/2" plywood.